

Datasheet

33W OSRAM High-Performance Stripe

- To use with constant current.
- Alu core PCB with 70 x OSRAM Duris E5 LEDs
- Solderless strip PCB with sockets for rigid strands (0.2 - 0.75 mm²).

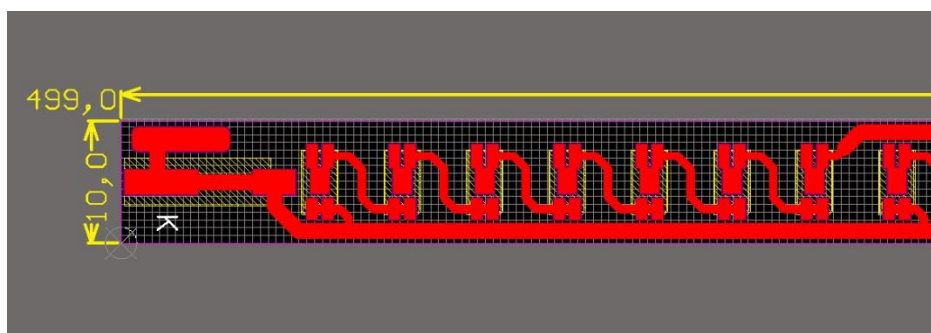
Technical Data

Specifications	Unit	Min.	Typ.	Max.
Dimensions (h/w/d)	mm		10/499.9/2.5	
Forward voltage	V	19.0	20.0	22.0
Current	mA	350	700	1500
Storage temperature	°C		-40... 100	
Operating temperature range (at the LED)	°C		-40... 85	

Color temperature and luminous flux

Part No.	Color Temperature	Flux min.	Flux typ.	CRI	Energy class
LT-3185	2700 K	1085 lm	2150 lm	>80	A++
LT-3186	4000 K	1200 lm	2350 lm	>80	A++
LT-3187	5700 K	1200 lm	2350 lm	>80	A++
LT-3211	6500 K	1200 lm	2350 lm	>80	A++

Dimensional drawing



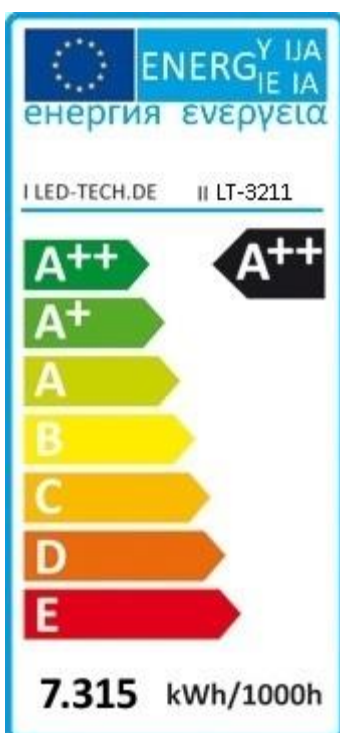
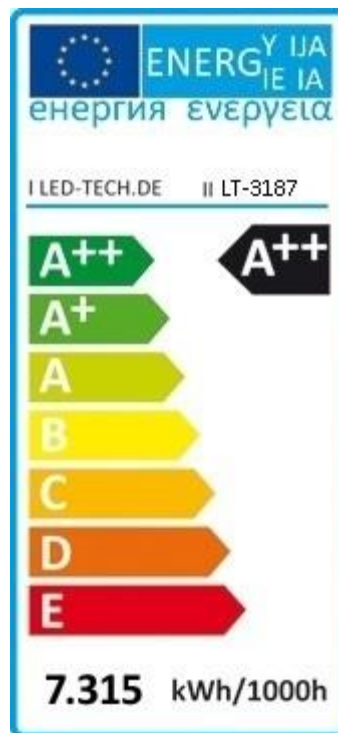
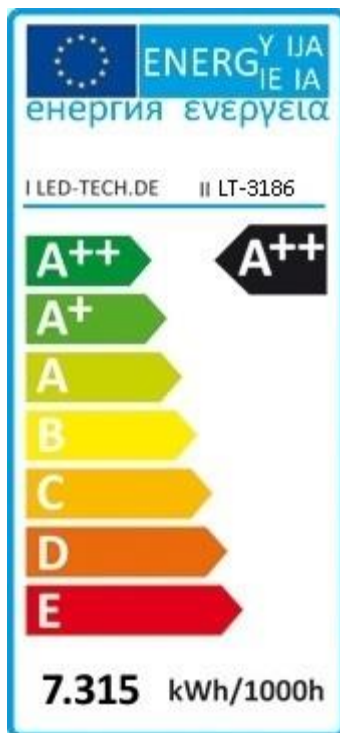
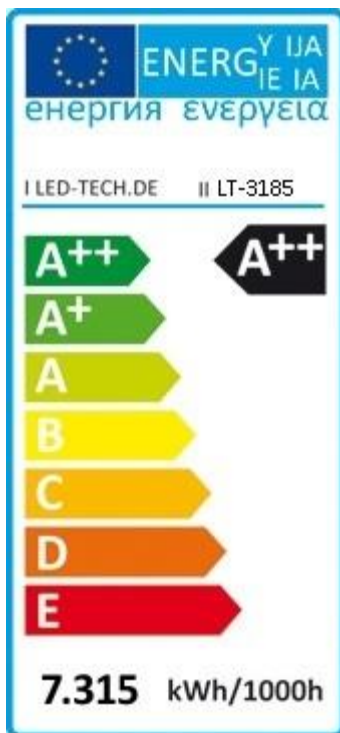
Safety information

Please note:

- Adequate cooling. This is a high performance LED module.
- Adequate ESD protection
- Appropriate and professional installation

Incorrect use can cause damage to the LED module.

Energy class



LED-TECH.DE optoelectronics GmbH

Thomas-Edison-Str. 1
47445 Moers

Geschäftsführer: Stefan Lenz

LED Online-Shop: www.led-tech.de
Forum/Community: www.ledstyles.de

USt.-ID/VAT: DE275755662
HRB: 10767 Amtsgericht Kleve
WEEE-Reg.-Nr. DE 23743710

Tel: (+49) 2841 / 97 91 7-0