

Datasheet

OSRAM Duris E5 on Strip PCB

- To use with 24V/DC. No constant current necessary
- 499,9mm Alu core PCB with 42 OSRAM Duris E5 LEDs

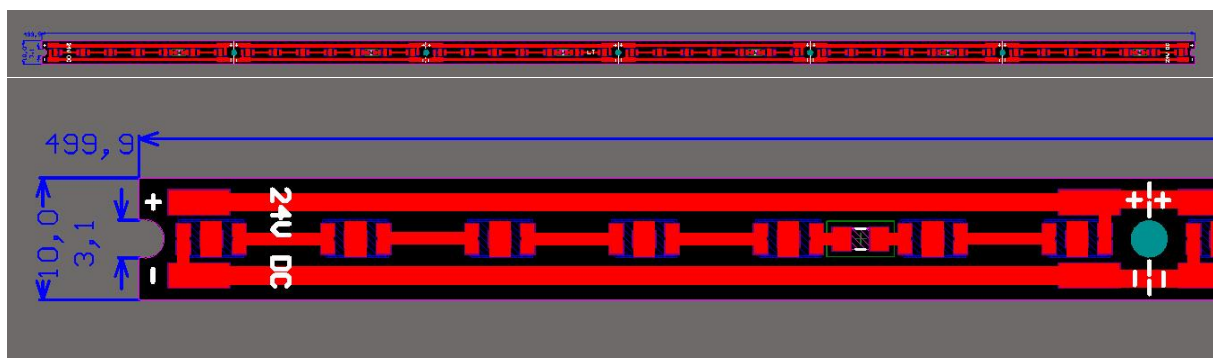
Technical Data

Specifications	Unit	Typ.	Max.
Dimensions (h/w/d)	mm	10/499.9/2.5	
Forward voltage	V	24	
Current	mA	900	1000
Storage temperature	°C	-40... 100	
Operating temperature range (at the LED)	°C	-40... 85	

Color temperature and luminous flux

Part No.	Color Temperature	Flux min.	Flux typ.	CRI	Energy class
LT-2112	2700 K	2500 lm	2800 lm	>80	A+
LT-2277	3100 K	2500 lm	2800 lm	>80	A+
LT-2145	4000 K	2500 lm	2800 lm	>80	A+
LT-2113	5000 K	2500 lm	2800 lm	>80	A+
LT-2278	5500 K	2500 lm	2800 lm	>80	A+
LT-2644	6750 K	2500 lm	2800 lm	>80	A+

Dimensional drawing



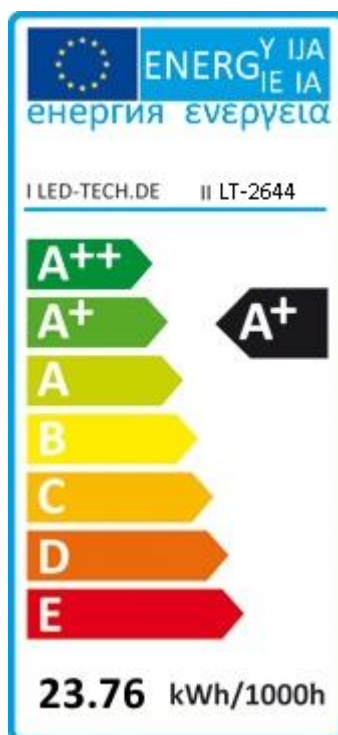
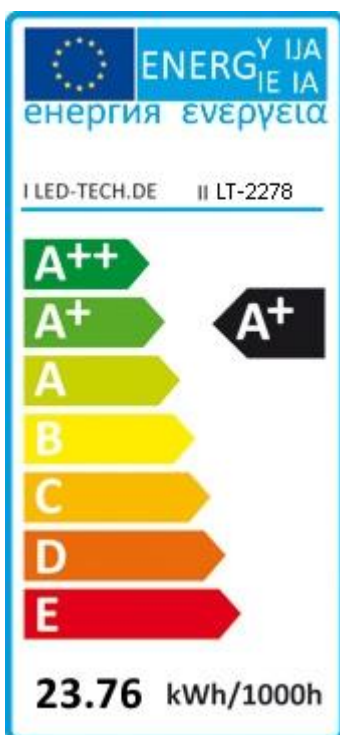
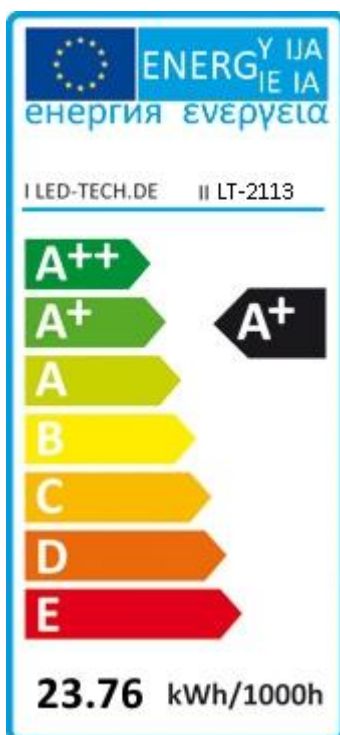
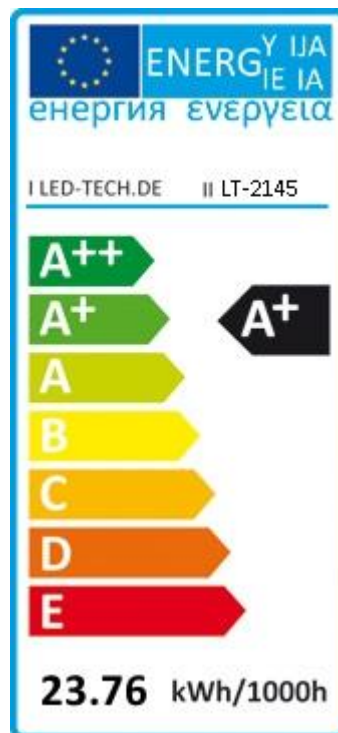
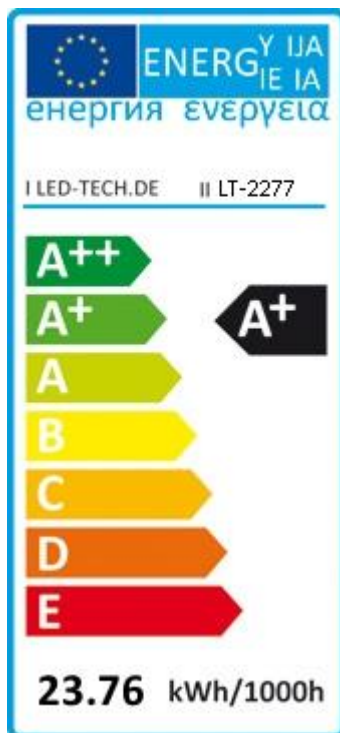
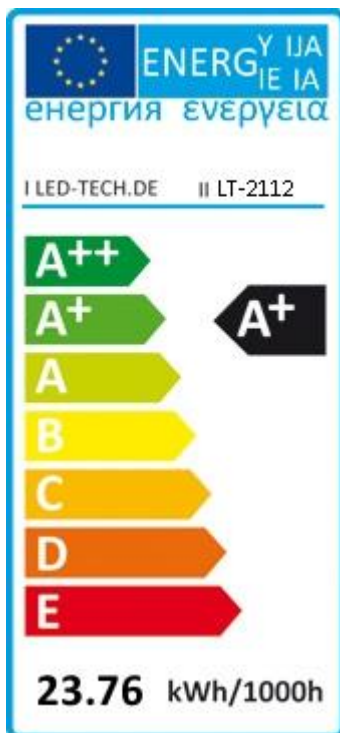
Safety information

Please note:

- Adequate cooling. This is a high performance LED module.
- Adequate ESD protection
- Appropriate and professional Installation

Incorrect use can cause damage to the LED module.

Energy class



LED-TECH.DE optoelectronics GmbH

Thomas-Edison-Str. 1
47445 Moers

Geschäftsführer: Stefan Lenz

LED Online-Shop: www.led-tech.de
Forum/Community: www.ledstyles.de

USt.-ID/VAT: DE275755662
HRB: 10767 Amtsgericht Kleve
WEEE-Reg.-Nr. DE 23743710

Tel: (+49) 2841 / 97 91 7-0